



CNISI
AT UCLA

*Promoting nanoscience research at
interfaces between disciplines*

INNOVATE.

*Translating discoveries into
commercial enterprises*

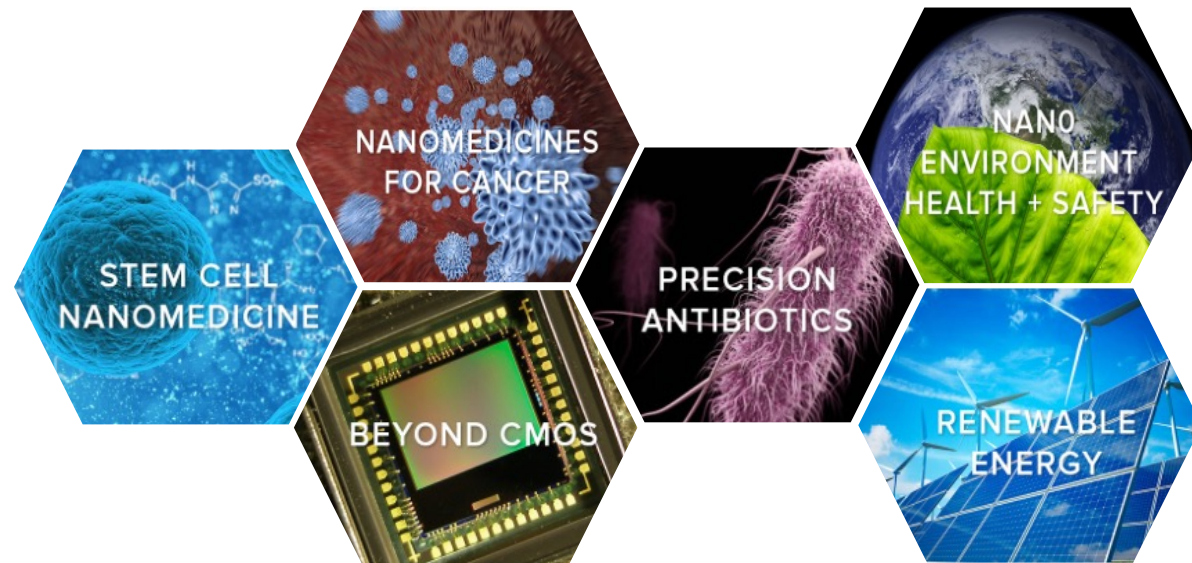
INCUBATE.

*Educating the next generation of
scientists and engineers*

ACCELERATE.



S I
AT UCLA



DISCOVERY

NanoSciences, NanoMaterials,
NanoTechnologies



TRANSLATION

Start-up Ventures, Industry Alliances,
Licensing & Tech Transfer

Team Science Platform

Address grand challenges in health &
biomedicine, energy, IT, environment

Assemble and support collaborative teams
that span disciplines

Technology Platform

Open-access Centers provide and develop
leading-edge technologies

Provide unique opportunities for workforce
development and student training in
industry-relevant technologies

Entrepreneurship Platform

10,000 sq. ft. wet lab & office incubation
space for UCLA start-ups

Currently incubating 32 start-ups onsite

Companies created >350 hi-tech jobs



CNSI TECHNOLOGY CENTERS

People powered. Tool enabled. Data driven.

- Fully open-access model supporting academia, government, non-profit and industry
- Professional staff offering training, service, and collaboration
- Supporting over 7,000 researchers 24 hours a day, 365 days a year

Identify, create, and deliver superior value



What is your mission?

WELCOME

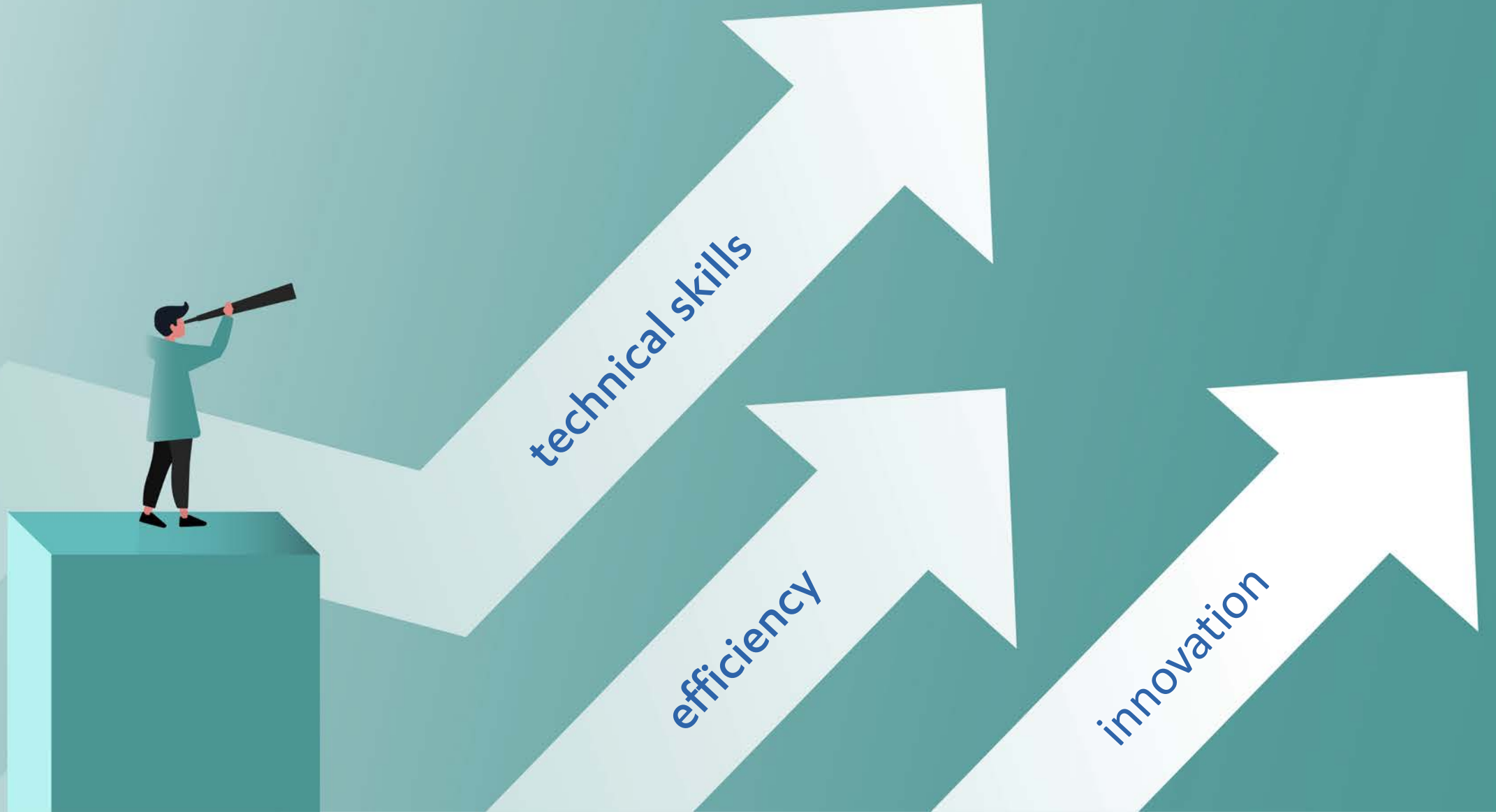
WE ARE

OPEN

PLEASE COME IN

Who are your customers?

Know your strengths & customer needs



It starts with a team...



Ivo Atanasov
Associate Director, Electron Imaging Center for Nanomachines
ivo@ucla.edu
(310) 983-1068



Laurent Bentolila, Ph.D.
Director, Advanced Light Microscopy/Spectroscopy Laboratory
lbento@chem.ucla.edu
(310) 983-1076



Noah Bodzin, M.S.
Senior Development Engineer, UCLA NanoLab
nbodzin@seas.ucla.edu
(310) 983-3312



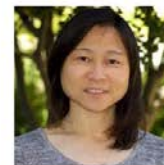
Chong Hyun "Paul" Chang, Ph.D.
Technical Director, Nano and Pico Characterization Laboratory (NPC)
chonghyun@ucla.edu



Robert Damoiseaux, Ph.D.
Professor, Molecular & Medical Pharmacology; Director, Molecular Screening Shared Resource
rdamoiseau@mednet.ucla.edu
(310) 794-1974



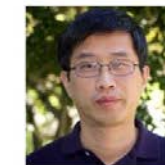
Huynh Do
Senior Development Engineer, UCLA NanoLab
do.huynh@gmail.com
(310) 206-4641



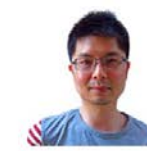
Yuwei Fan, Ph.D.
Sr. Development Engineer, UCLA NanoLab
fan@cnsi.ucla.edu
(310) 983-3257



Brandon Han
Technology Center Staff, Molecular Screening Shared Resource



Wong Hoi Hui
Staff Research Associate, Electron Imaging Center for Nanomachines
wonghoihui@ucla.edu
(424) 442-4573



Bo-Chao Huang
Staff Research Associate, Electron Imaging Center for Nanomachines
alanhuang@ucla.edu
(310) 206-8923



You-Sheng "Wilson" Lin
Technical Director, UCLA NanoLab
yousheng@seas.ucla.edu
(310) 206-8923



Matthew Mecklenburg, Ph.D.
Managing Director, UCLA Electron Imaging Center for Nanomachines (EICN)
mmecklenburg@cnsi.ucla.edu
310-983-1257



Lorna Tokunaga
Sr. Development Engineer, UCLA NanoLab
lornat@cnsi.ucla.edu
(310) 983-3413



Angelica Saenz-Trevizo
Research & Development Engineer, UCLA NanoLab
asaenz@cnsi.ucla.edu



Matthew J. Schibler, Ph.D.
Microscopy Staff Scientist, Advanced Light Microscopy/Spectroscopy Laboratory
mschibler@mednet.ucla.edu
(310) 983-1077



JiriYoung "Brian" Jeong
Research & Development Engineer
bjeong@cnsi.ucla.edu
(310) 983-1077



Jamie Kahng
Business Administrator, UCLA NanoLab
jamie@seas.ucla.edu
(310) 206-9908



Mike Lake, Ph.D.
Technical Director, BioPACIFIC MIP Living BioFoundry
mlake@ucla.edu
(310) 825-8066



Tom Lee
Principle Development Engineer, UCLA NanoLab
leet@seas.ucla.edu
(310) 206-4641



Baolai Liang, Ph.D.
Technical Director, Integrated NanoMaterials Lab
bliang@cnsi.ucla.edu
(310) 983-3116



Adam Z. Stieg, Ph.D.
Associate Director of Technology Centers; Executive Director, BioPACIFIC MIP; Director, Nano & Pico Characterization Lab
stieg@cnsi.ucla.edu



David Strugatsky
Project Scientist, Electron Imaging Center for NanoMachines (EICN)
strugd@g.ucla.edu



Judy Su
User Coordinator, Electron Imaging Center for NanoMachines (EICN)
judithsu@g.ucla.edu



Anne Vitorelli
Lab Manager, Magnify & Technology Centers
anne@cnsi.ucla.edu



Connie Yuen
Technology Center Staff, Molecular Screening Shared Resource

...and a culture.

'Team' is not simply a group of people



'Team' is a mindset of collaboration



is intentional, aligns, differentiates, attracts & retains.

It's what we do!

**Know your value, remind
people of it, and grow
your strengths**



Your team and services are NOT commodities

- Commodities are widely available & interchangeable
 - Services are differentiated products or methods
 - Commoditization leads to devaluation



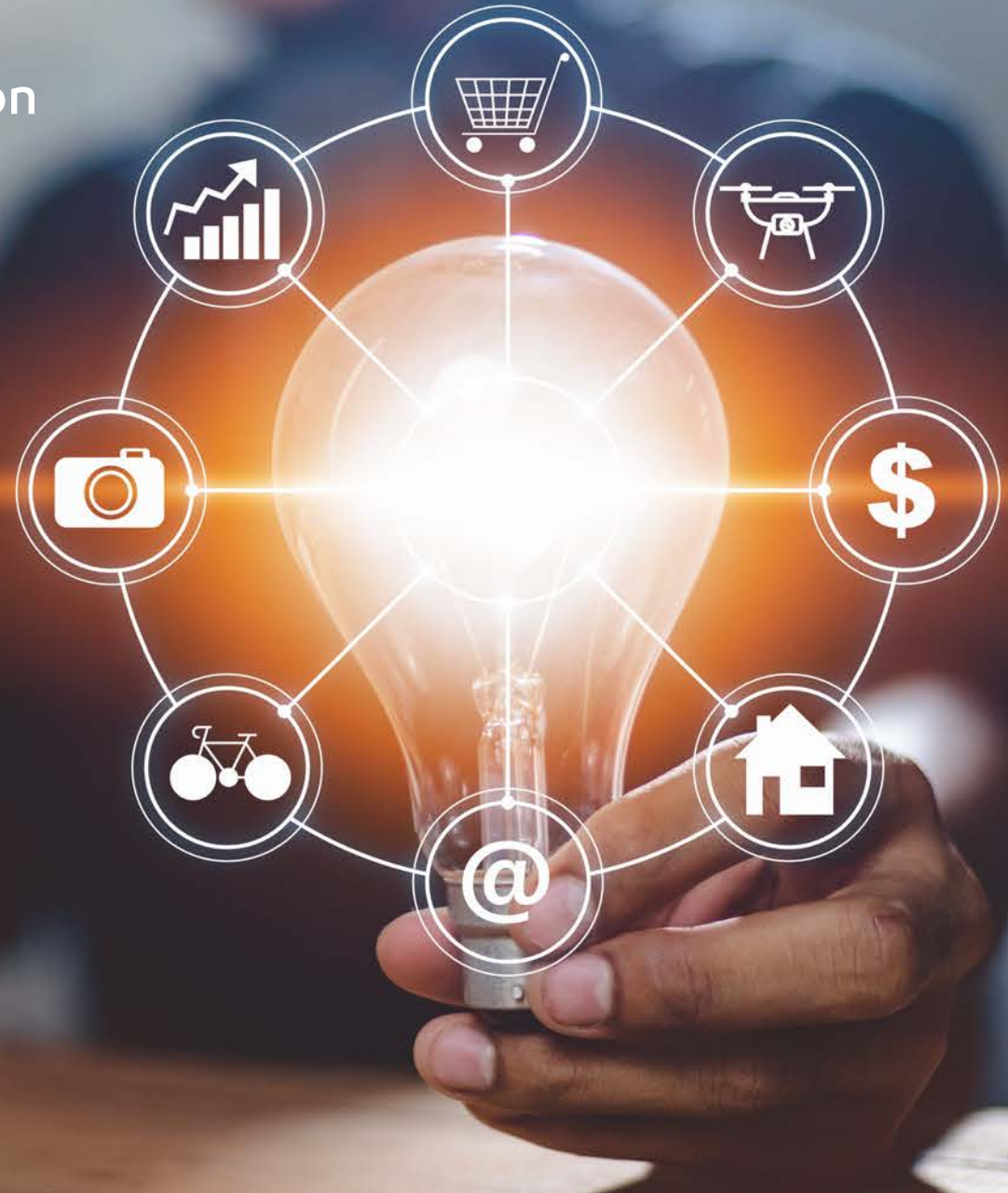
Acknowledge and empower expertise

Create opportunities to engage in discovery through ideation & collaboration



Inspire invention

Protect the rights of your team & organization





HIRE

cultural contributors

TRAIN

define roles & values

REWARD

recognize success

RETAIN

create opportunity

Culture can be a force multiplier

**ATTRACTING
TOP TALENTS**

»

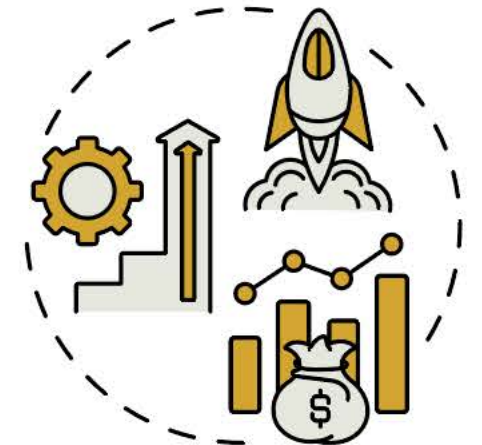
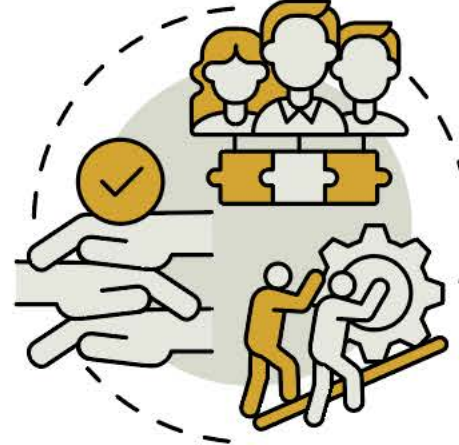
**HIGHER
EMPLOYEE
RETENTION**

»

**HIGHER
EMPLOYEE
ENGAGEMENT**

»

**INCREASED
PRODUCTIVITY
& PROFITABILITY**



Build it with intention and purpose

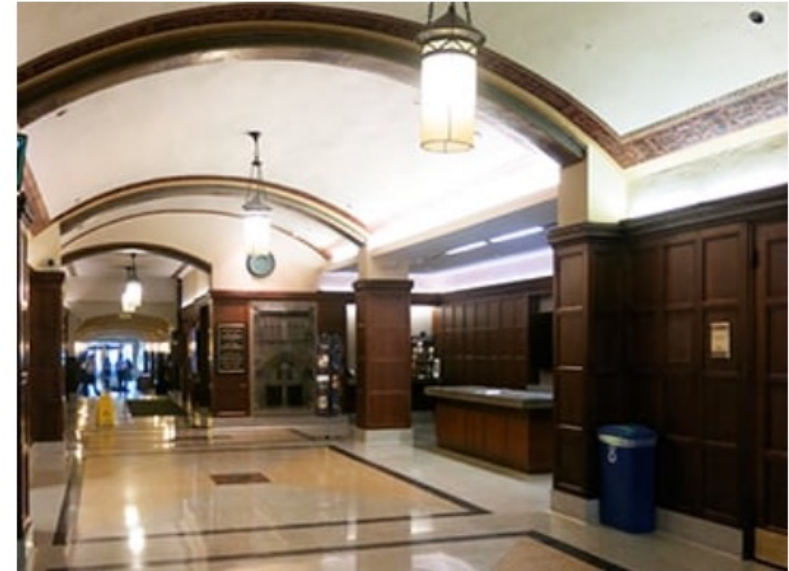
Leadership and Management in Core Facilities

How to meet the unique challenges of operating in a university setting

Running a core facility successfully requires both a strong set of business management skills and deep insights into the nuances of leadership in a university setting. This four-day executive learning experience focuses specifically on helping you enhance your business and management skills and developing the leadership capacity to run your operation more effectively.

In this hands-on program, you'll expand your knowledge and learn new approaches to leadership as you practice applying them to a challenge in your own organization. You'll develop a team orientation that will enable you to engage your teams more effectively. You'll leave this program with a deep understanding of your individual strengths and how to leverage them to meet difficult challenges and seize new opportunities.

CENTER FOR NONPROFIT MANAGEMENT



Grow your ability to master the competitive landscape

Northwestern

Kellogg
School of Management



Adam Stieg, Ph.D.

Associate Director – California NanoSystems Institute
Director - Nano and Pico Characterization Laboratory
Executive Director – BioPACIFIC Materials Innovation Platform
stieg@cnsi.ucla.edu

Technology Centers

techcenters@cnsi.ucla.edu

Web

cnsi.ucla.edu
twitter.com/cnsiatucla
linkedin.com/school/cnsiatucla



Adam Stieg, Ph.D.

Associate Director – California NanoSystems Institute
Director - Nano and Pico Characterization Laboratory
Executive Director – BioPACIFIC Materials Innovation Platform